

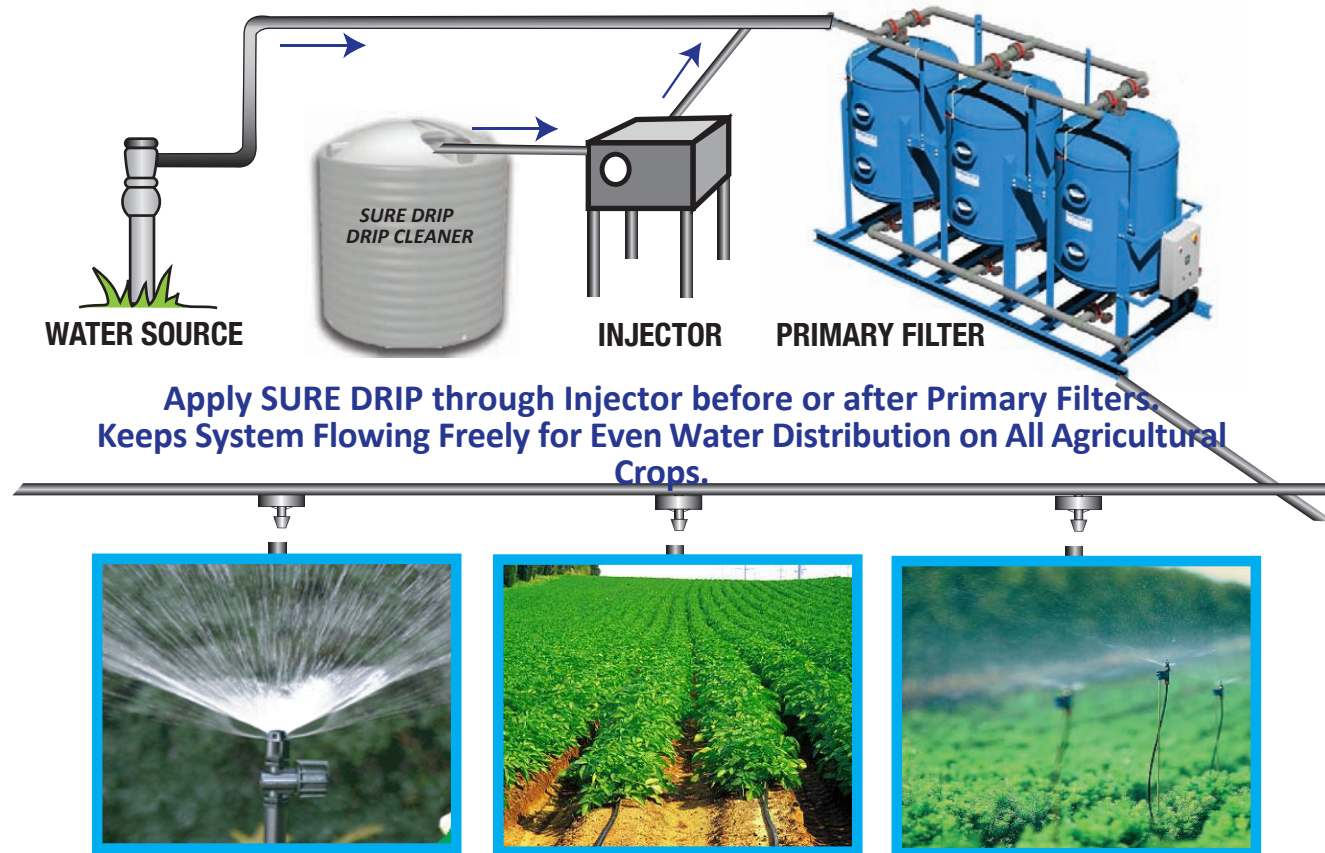
SURE DRIP

DRIP IRRIGATION CLEANER



**DRIP CLEANER AND
MAINTAINER FOR
ALL DRIP AND MICRO
IRRIGATION SYSTEMS**

**Formulated to Clean Irrigation Systems of Mineral Deposits
and all other Inanimate Particles Carried by Water.**



**Apply SURE DRIP through Injector before or after Primary Filters.
Keeps System Flowing Freely for Even Water Distribution on All Agricultural
Crops.**

SAFE & EASY TO USE

- Completely Safe on all Agricultural Crops.
- Non-Toxic, Biodegradable & Non-Polluting.
- Drip-A-Tron is Non-Volatile and Nonflammable.

Registered U.S. Patent Office

STATEMENT OF COMPOSITION

5.00%	Hydrochloric Acid (HCL) (USP)
10.00%	Phosphoric Acid (USP)
2.00%	Quzyme (Enzymes)
1.00%	Cutrine (USP)
2.00%	Hum-Aid (USP)
20.00%	Spirostant (USP)
10.00%	Sarsaponin (USP)
15.00%	Parigenin (USP)
11.00%	Sarapogenin (USP)
24.00%	Inert Ingredients

WARRANTY

Because the manufacturer has no control over the dispersing or the use of this product, no warranty is expressed or implied. In no case will the manufacturer be held responsible for damages resulting from failure to use according to specific directions. The buyer will assume all risks and liabilities resulting from the improper handling of this product.

KEEP OUT OF REACH OF CHILDREN - AVOID CONTACT WITH EYES

MANUFACTURED FOR;
BioTec Industrial Inc.
P.O. Box 8344
Fresno, CA 93747
(855) 996-3677
www.biotecindustrial.com

- Will not Harm Roots or Alter the Soils pH
- Maintains an Even Water Distribution
- Reduces Costly Emitter Replacement
- Replaces use of Harsh Acids and Chlorine

- Cleans all Drip Irrigation Systems of Mineral Deposits and all other Inanimate Particles Carried by Water
- Saves on System Maintenance Cost

- Biodegradable
- Non-Toxic
- Non-Polluting
- Completely Safe to Use

SURE DRIP

CLEANER AND MAINTAINER FOR ALL DRIP IRRIGATION SYSTEMS



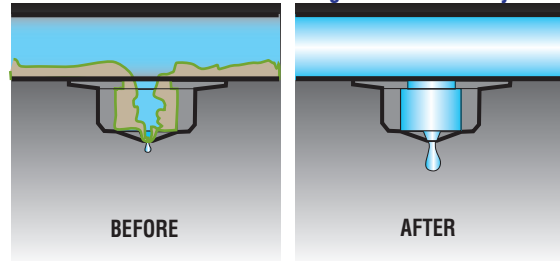
- Biodegradable, Non-Toxic
- Non-Polluting, Cost Effective

SURE DRIP IS NOT INTENDED TO BE USED AS OR MIXED WITH PESTICIDE PRODUCTS

SURE DRIP was developed to clean, lubricate and maintain all Drip, Micro and Sub Surface Irrigation Systems. Composed of enzymes, acids, and lubricants to form a cost effective Drip Irrigation Cleaner. When injected properly into any type of Drip System, SURE DRIP penetrates and breakdown mineral deposits to pass freely through the system along with other inanimate particles carried in your irrigation water.

SURE DRIP is completely safe for the environment. A non-toxic and biodegradable material, SURE DRIP will not alter the PH in soils and will not damage any of the root system.

Maintains even water flow throughout the entire system



MANUFACTURERS STATEMENT

When applying SURE DRIP to a severely blocked or troubled irrigation system, allow SURE DRIP to remain in lines for a minimum of 36 to 72 hours, then open all line ends and flush the system thoroughly before use. After your system has been cleaned and flushed, use SURE DRIP continually treating the influent water to keep inanimate particles from bonding inside the system maintaining even water distribution throughout the entire irrigation system. SURE DRIP can also be applied during the last hour of the irrigation cycle. See Application Rates for which method will provide the best use of SURE DRIP to keep your system flowing free of mineral deposits and all other inanimate particles carried in irrigation water.

Do not mix SURE DRIP with liquid fertilizers. Apply fertilizers at the start of the irrigation cycle allowing sufficient time for fertilizers to exit before injecting SURE DRIP into the system.

PRECAUTIONARY STATEMENT:

CONTAINS HYDROCHLORIC ACID

KEEP OUT OF REACH FROM CHILDREN

Always wear latex or rubber gloves when handling this material. Protect face and eyes with goggles or face shield.

IN CASE OF CONTACT WITH EYES OR SKIN, FLUSH EYES THOROUGHLY WITH WATER FOR 15 MINUTES. FOR SKIN, RINSE SKIN THOROUGHLY, CAN CAUSE MINOR IRRITATION TO OPEN SORES AND CUT IF NOT RINSED IMMEDIATELY IF IRRITATION PERSISTS SEEK MEDICAL ATTENTION

IF SWALLOWED, DRINK ONE TO TWO GLASSES OF MILK OR WATER CALL A PHYSICIAN FOR ANY SYMPTOMS OF DISCOMFORT

APPLICATION RATES AND METHODS

SEVERE BLOCKAGE

TREES AND VINES

Apply 1 gallon SURE DRIP per every 10 acres.

SUB SURFACE IRRIGATION SYSTEMS

Apply 1 1/2 gallons SURE DRIP per every 10 acres.

APPLICATION

Total the number of gallons needed to properly treat your system, convert the total gallons needed into ounces. Divide the total amount of ounces by the length of time in minutes it takes to fill your system. Dividing the ounces by the number of minutes will provide the number of ounces to be injected into the system per minute to obtain equal distribution throughout the system. Let stand for 36 to 72 hours then open all line ends and begin flushing the system thoroughly until clean water appears.

DETERMINING THE AMOUNT OF OUNCES INJECTED PER MINUTE

Example - 50 acres of sub surface irrigation at the rate of 1 1/2 gal per every 10 acres = 7 1/2 gals or 960 ounces. The length of time is 25 minutes. The equation, 960 divided by 25 = 38.4 ounces. Rate of injection is 38.4 ounces per minute for 25 minutes then shut the system down.

CONTINUAL USE APPLICATION

With a clean system, apply 3 to 5 parts of SURE DRIP per every million parts of water. SURE DRIP must be metered in continually to treat the influent water properly.

MAINTENANCE

TREES AND VINES

Apply 2 to 2 1/2 ounces of SURE DRIP per acre.

SUB SURFACE IRRIGATION SYSTEMS

Apply 3 to 3 1/2 ounces of SURE DRIP per acre.

APPLICATION

Apply prior to ending the irrigation cycle. Total the number of ounces needed to properly treat your system. Divide the total ounces by the length of time in minutes it takes to reach the end of the system. Dividing the ounces by the number of minutes will provide the number of ounces to be injected per minute.

MAINTENANCE (CONTINUED)

DETERMINING THE AMOUNT OF OUNCES INJECTED PER MINUTE

Example- 50 acres of sub surface irrigation at a rate of 3.5 ounces per acre = 175 ounces. The length of time is 25 minutes.

The equation, 175 divided by 25 = 7.0 ounces. The rate of injection is 7.0 ounces per minute for the last 25 minutes of the irrigation cycle.

CLEANING FILTER TANKS

Pour 1 gallon SURE DRIP directly into each tank, let stand for 24 hours then back flush tanks.

CLEANING EMITTERS

In a plastic container mix enough SURE DRIP with an equal amount of water to submerge emitters. Let stand for 24 hours, then rinse thoroughly before use.

WINTERIZING

Apply 1 gallon of SURE DRIP per every 10 acres.

APPLICATION

Calculate the number of gallons needed to properly treat your system, convert the gallons into ounces. Divide the total amount of ounces by the length of time in minutes it takes to fill your system. Dividing the ounces by the number of minutes will provide the number of ounces to be injected into the system per minute to obtain equal distribution throughout the entire system. Let stand in system until next season, then open all line ends and flush system thoroughly before use.

DETERMINING THE AMOUNT OF OUNCES INJECTED PER MINUTE

Example- 50 acres of vines at the rate of 1 gal per every 10 acres = 5 gals or 640 ounces, The length of time is 25 minutes. The equation, 640 divided by 25 = 25.6 ounces to be injected into the system per minute for the first 25 minutes from when starting the system. Allow material to reach all line ends and let stand until the next season, then open all line ends and flush the system before use.